

Rekeying Brinks L-Series Locks

Tools Required: Pickle tool, plug follower, Key Decoder, KW1 pins

What is Covered

Disassembling the lock

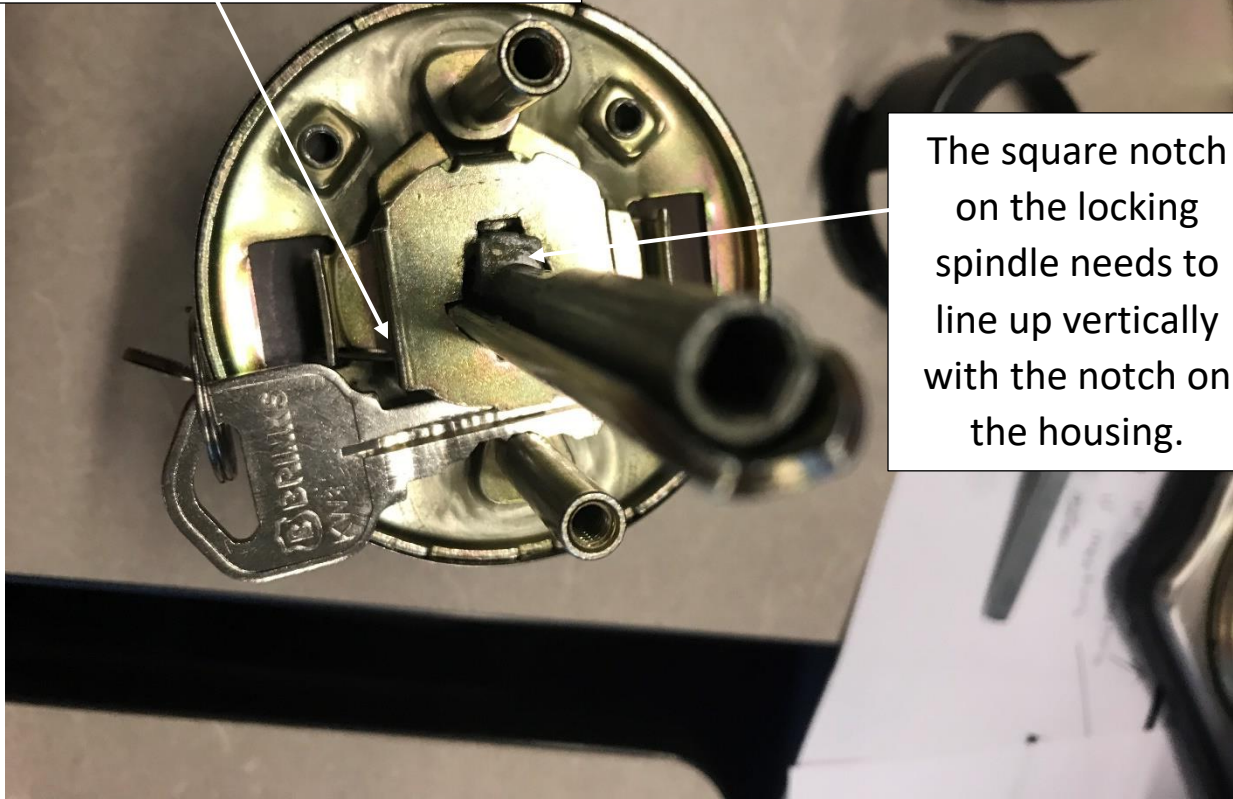
Adding new pins

Re-assembling the Brinks lock



Unscrew the two screws to remove anti-pry shield surrounding the spindle and the spring housing.

Place Key or pickle tool against the screw post and rotate to push the spring housing out of its home position.



The square notch on the locking spindle needs to line up vertically with the notch on the housing.

With the notches lined up and the key under the housing, the locking spindle will drop out. You might need to use your finger to assist in pulling it out.



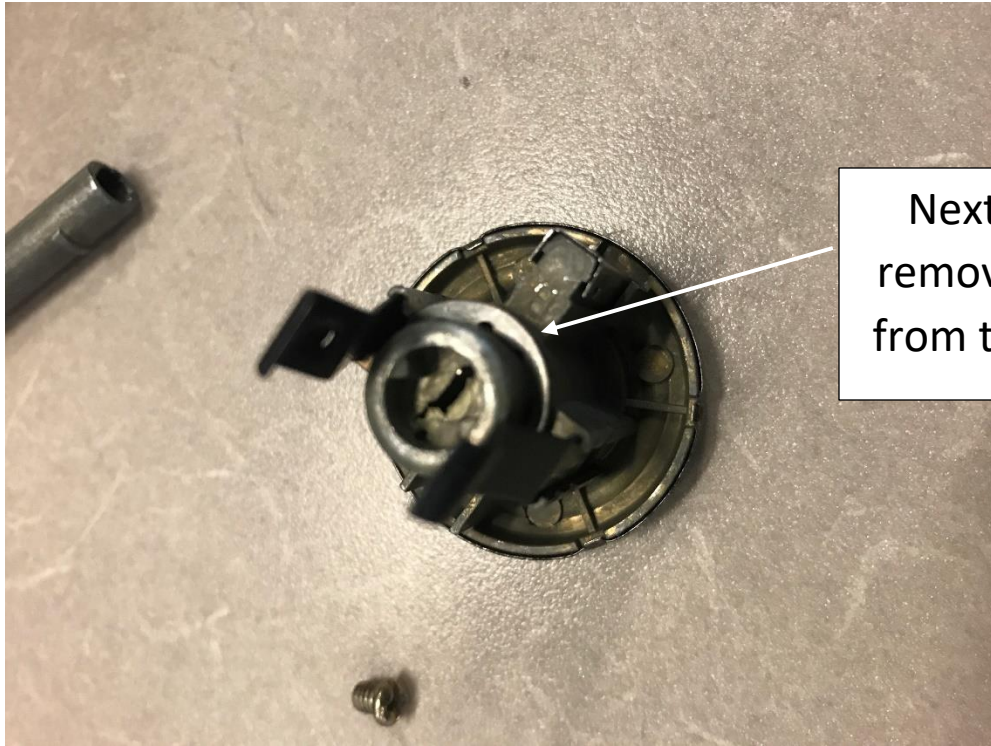


Insert the fork end of the pick tool down the spring housing with the flat of the tool aligned with the screw posts.

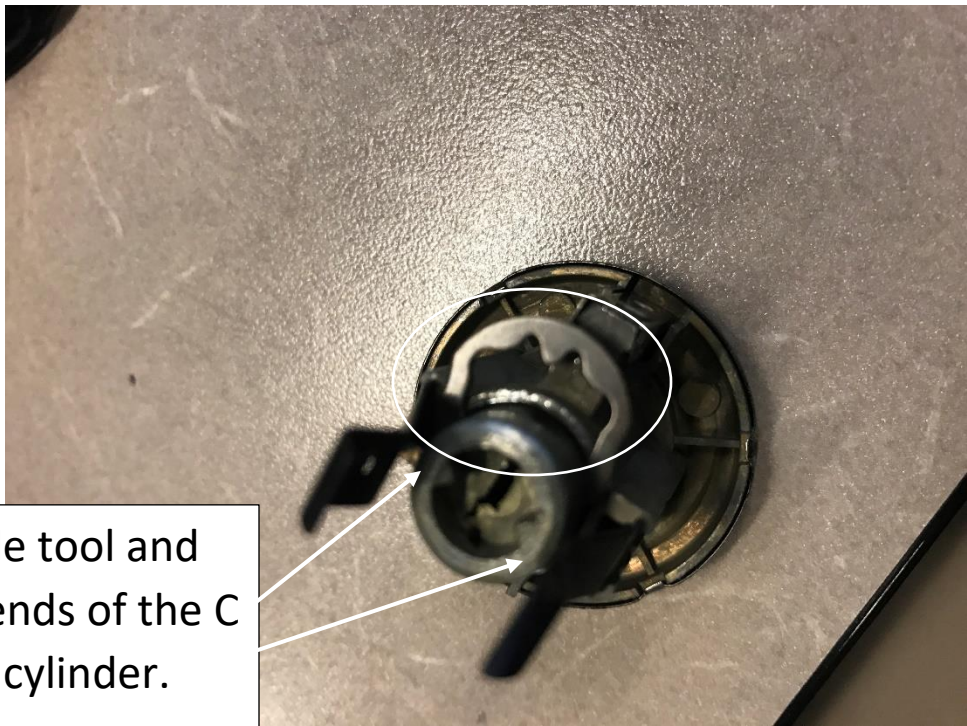
Slide the pick tool down the chamber.

Turn the lock upside down and after a couple taps on the table the cylinder will pop out.





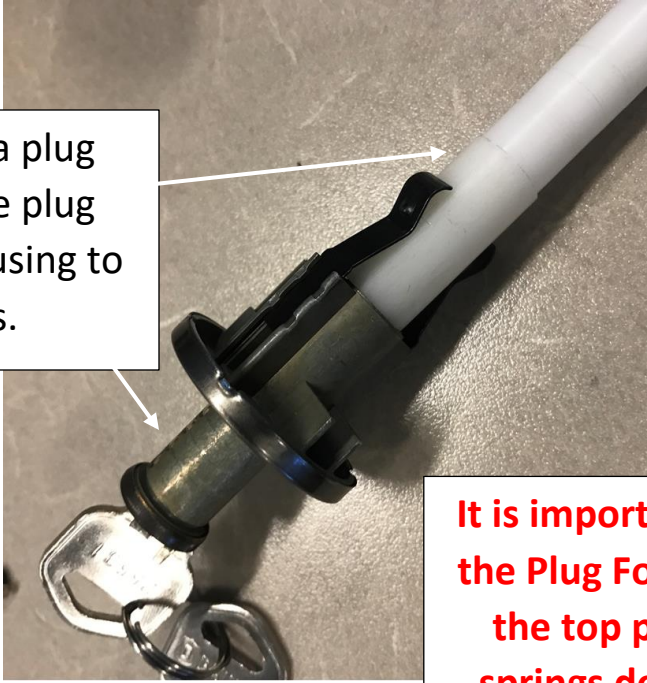
Next step is to remove the C clip from the cylinder.



Use the Pickle tool and push the two ends of the C clip off the cylinder.
Be careful, the C-clip may want to fly off the cylinder after removing it.



Turn the key 45 degrees in either direction



Use the flat end of a plug follower to push the plug from the cylinder housing to expose the pins.

It is important to use the Plug Follower so the top pins and springs do not fall from the cylinder

You can now, turn the Cylinder upside down to remove the pre-existing pins.

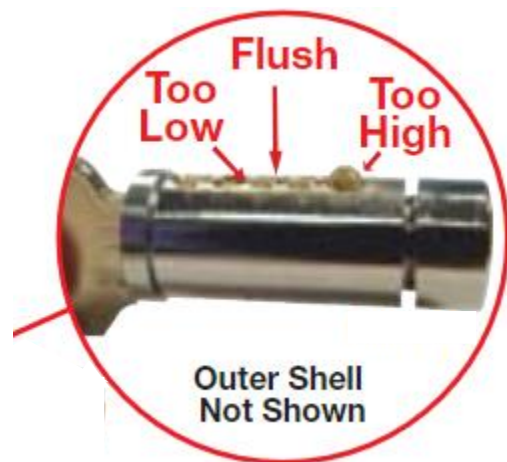
**Use the Key Decoder to
determine the code of the
new key**



Insert the new key through the large end of the cutout, until each number on the key is aligned with the key decoder. This will determine which 5 pins to use according to your new key

Drop the new pins into the plug making sure they are in the order in which you measured the cuts on the key.

When finished, all the pins should sit flush or level with the plug.



To Re-Assemble



Keep your new key inserted in the plug.

Turn the Key 45 degrees in either direction.

Use your plug following tool and slowly insert it back into the cylinder housing.

With the new key inserted and still rotated 45 degrees, replace the C clip.

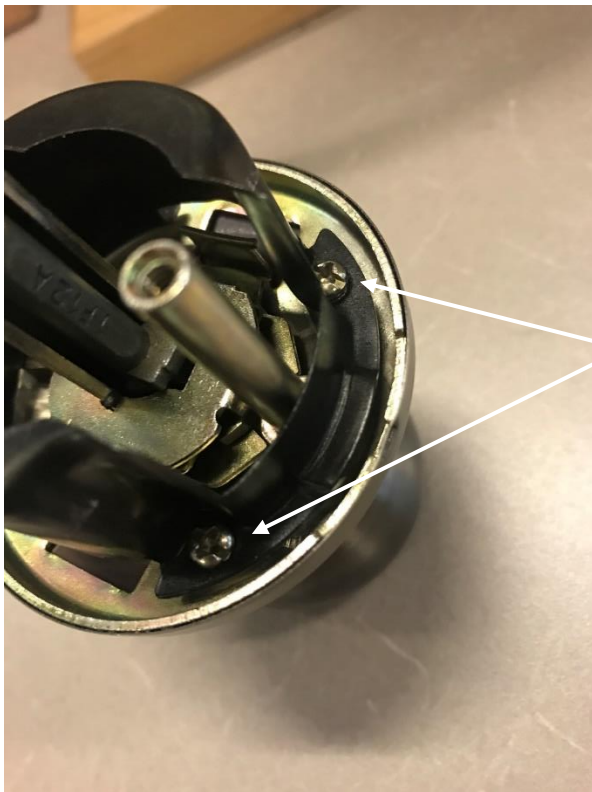
Use the pickle tool to slide it on tightly.



Test the key by rotating in both directions. To remove the key, turn to vertical position and pull it out. Make sure the C clip is securely in position before doing this.



Slide the locking spindle into the spring housing until you hear it click into place.



For the final step, Re-attach the metal body with the two screws

Check your work

Turn your key

Make sure the spindle rotates and the
key removes easily