

LIMITED LIFETIME WARRANTY

This product is warranted to be free from defects in material and workmanship for the life of the product. If a defect in material or workmanship occurs, call 1-800-562-5625 for instructions on how to have the defective product repaired or replaced free of charge.

LIMITATIONS

- This warranty only covers the assembled lighting fixture and is not extended to other components or equipment that is used in conjunction with the product.
- This warranty is extended to the original purchaser of the product. A purchase receipt or other approved proof of purchase is required before warranty service will be rendered.
- Unauthorized service or modification to this product or any furnished component will void the warranty in its entirety.
- THIS WARRANTY IS EXPRESSLY IN LIEU OF ALL OTHER WARRANTIES, EXPRESSED OR IMPLIED, INCLUDING ANY WARRANTY, REPRESENTATION OR CONDITION OF MERCHANTABILITY OR THAT THE PRODUCTS ARE FIT FOR ANY PARTICULAR PURPOSE OR USE, AND SPECIFICALLY IN LIEU OF ALL SPECIAL, INDIRECT, INCIDENTAL, OR CONSEQUENTIAL DAMAGES (INCLUDING BUT NOT LIMITED TO ANY LOSS OF BUSINESS OR PROFITS, WHETHER OR NOT FORESEEABLE) RESULTING FROM THE USE OF THE PRODUCT OR ARISING OUT OF ANY BREACH OF THIS WARRANTY.  
Some states or provinces do not allow the exclusion of incidental or consequential damages, so the above limitation or exclusion may not apply.
- This warranty gives you specific rights, and you may also have other rights that vary from state to state.

NOT COVERED

- Lamp Bulb(s)
- Failure of the product as a result of an accident, abuse, negligence, alteration, or faulty installation, or any other failure not relating to faulty material or workmanship.
- Damaged caused by separately purchased replacement bulbs.
- Corrosion and discoloration of brass components.
- Reimbursement for inconvenience, installation, setup time, loss of use, or unauthorized service.



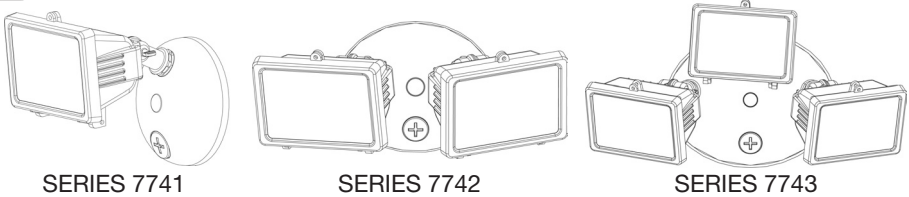


HAMPTON

  
Hampton Products International Corp.  
50 Icon  
Foothill Ranch, CA 92610-3000  
www.hamptonproducts.com  
Made in China  
© 2005 Hampton Products International Corp.  
REVA 05/05  
999-60010

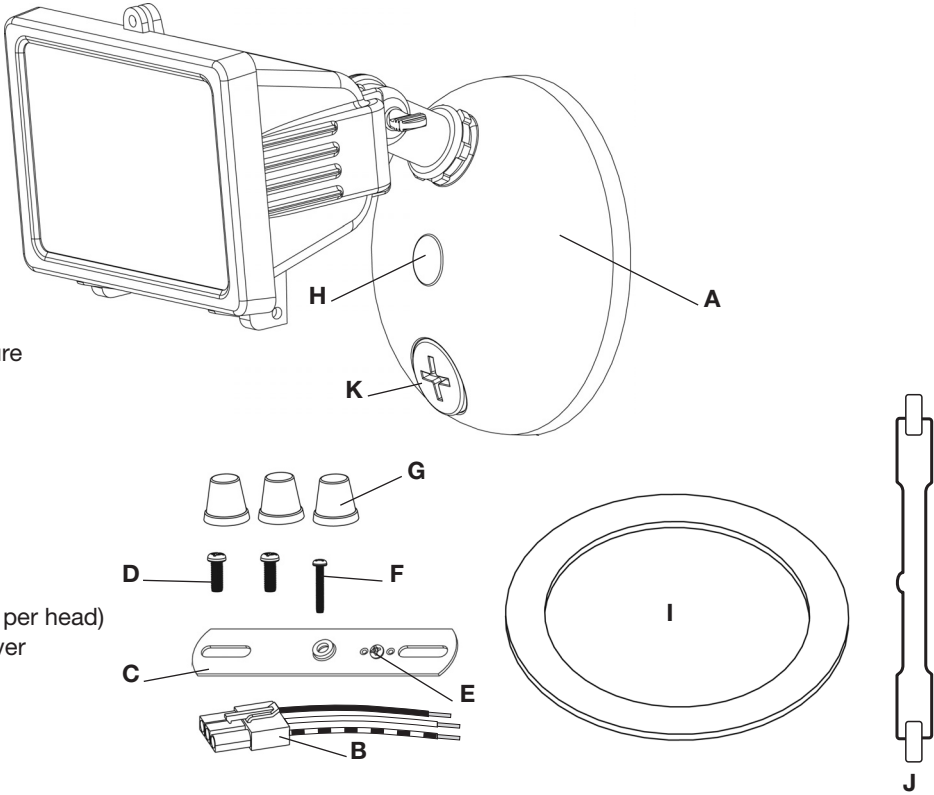
Patent Pending

INSTALLATION INSTRUCTIONS FOR  
OUTDOOR SECURITY FLOODLIGHTS



IMPORTANT SAFETY INFORMATION

- **TURN POWER OFF AT THE MAIN POWER PANEL OR FUSE BOX BEFORE INSTALLING OR REPLACING THE FIXTURE AND/OR WHEN REPLACING THE BULBS.**
- **THIS PRODUCT MUST BE INSTALLED IN ACCORDANCE WITH ALL APPLICABLE INSTALLATION CODES BY A PERSON FAMILIAR WITH THE CONSTRUCTION AND OPERATION OF THE PRODUCT AND THE HAZARDS INVOLVED.**
- If you are not familiar with electrical wiring, it is recommended that you secure the services of a qualified electrician who can assure that this installation meets local, state, and national codes.
- Before installing this fixture, be sure to check with local ordinances regarding approved outdoor lighting.
- The electrical system and the method of connecting this fixture to the system must be in accordance with local, state, and national electrical codes.
- This fixture is to be connected to a 120-Volt, 60 Hz power source.  
Connecting to a different power source may create a hazard and will void the warranty.
- This fixture should be mounted to a grounded junction box marked for use in wet locations.
- This fixture is for outdoor use only.
- Do not use near or around flammable/combustible materials or liquids.
- The bulb and unit can get hot during use.  
Turn off the power and allow the unit to cool down for at least 20 minutes before working on the unit.
- When replacing the bulb(s), use only a T3 Halogen bulb (150 Watt max) of the same size.  
Never use a bulb with a higher wattage than the stated maximum wattage allowed for the fixture.  
Using a higher wattage bulb may cause a fire hazard and/or cause damage to the unit.
- Always handle halogen bulbs with gloves or a soft cloth. NEVER touch the bulb with your bare hands.  
Oil from your hand may cause the bulb to fracture when illuminated.
- If it becomes necessary to replace the lens, only use a tempered safety glass of equal thickness.
- Do not attempt to open the fixture housing. There are no serviceable parts inside.



WHAT'S INCLUDED

- A – CREATaLIGHT™ Outdoor Lighting Fixture
- B – EZ-N-STALL™ Connector
- C – Mounting Bar
- D – Mounting Bar Screws (2)
- E – Ground Screw
- F – Fixture Mounting Screw
- G – Wire Connectors (3)
- H – Fixture Mounting Screw Cover
- I – Gasket
- J – T3-150 Watt Halogen Bulb(s) (One bulb per head)
- K – CREATaLIGHT™ Accessory Socket Cover

TOOLS YOU WILL NEED

- #2 Phillips Screwdriver
- Silicone Sealant or Caulk

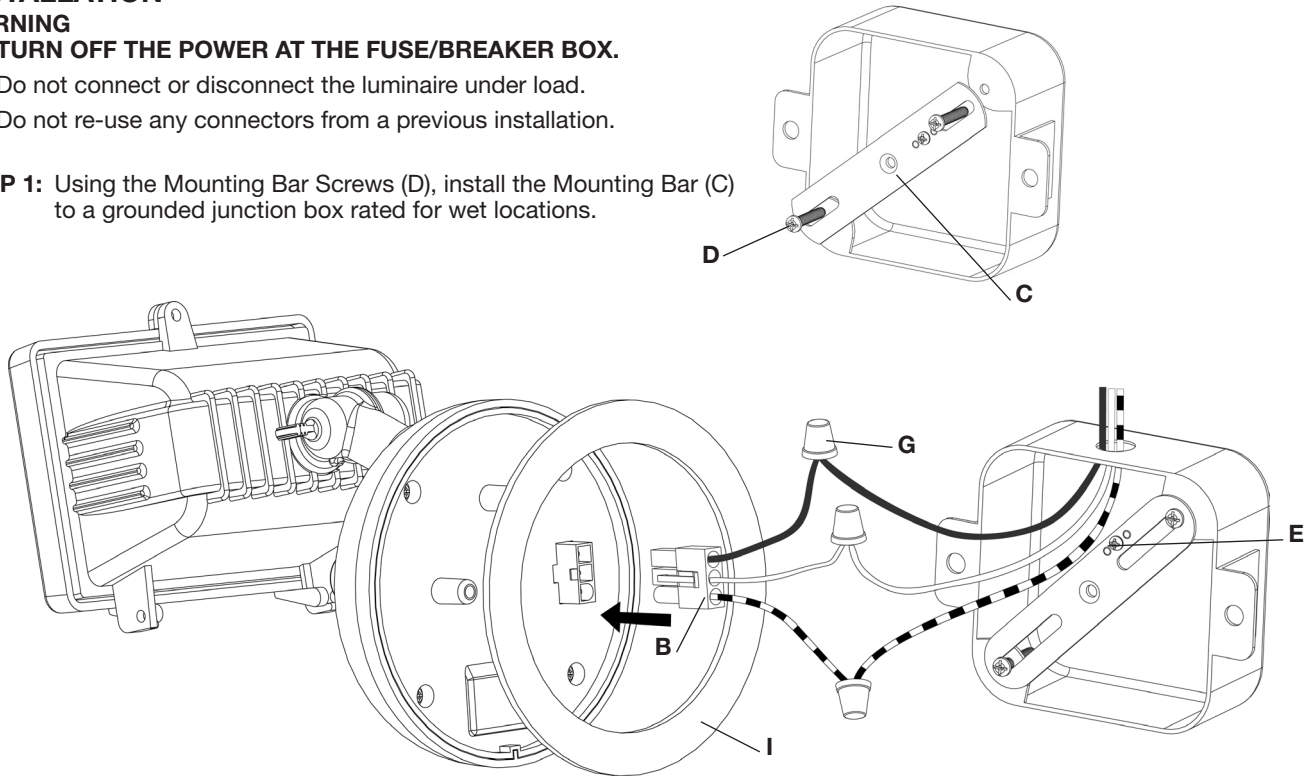
**INSTALLING YOUR NEW SECURITY FLOODLIGHT**  
**INSTALLATION TIPS**

- If not preassembled, install the bulb(s) (J) into each lamp head before beginning floodlight installation. (See INSTALLING THE BULB on page 3)
- If a CREATaLIGHT™ Accessory is being installed in conjunction with a CREATaLIGHT™ Floodlight, it may be easier to assemble the accessory to the floodlight before installing the floodlight. See instructions enclosed with accessory.

**INSTALLATION**

- WARNING**
- **TURN OFF THE POWER AT THE FUSE/BREAKER BOX.**
  - Do not connect or disconnect the luminaire under load.
  - Do not re-use any connectors from a previous installation.

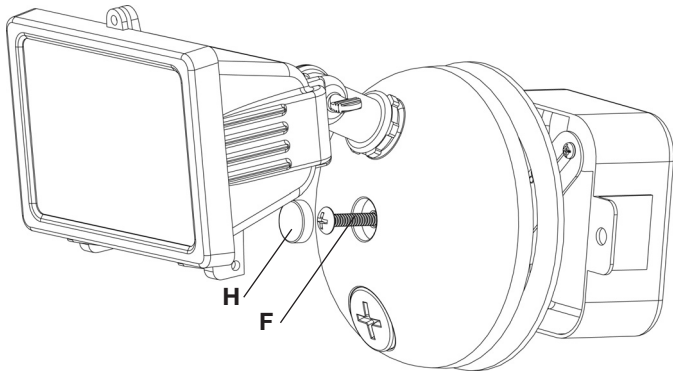
**STEP 1:** Using the Mounting Bar Screws (D), install the Mounting Bar (C) to a grounded junction box rated for wet locations.



**STEP 2:** Using the Wire Connectors (G), connect the house wires to the matching colored wire on the EZ-N-STALL™ Connector (B).

- Connect the green wire (ground) from the EZ-N-STALL™ Connector to the green (or copper) wire from the junction box. If there is no green (or copper) wire from the junction box, then connect the green wire from the EZ-N-STALL™ Connector to the ground screw (E) on the mounting bar.
- Connect the black wire from the EZ-N-STALL™ Connector to the black wire from the junction box.
- Connect the white wire from the EZ-N-STALL™ Connector to the white wire from the junction box.

**STEP 3:** Insert the EZ-N-STALL™ Connector through the gasket (I) and into the connector socket on the back of the fixture. Make sure that the EZ-N-STALL™ Connector is properly secured. (To detach the EZ-N-STALL™ Connector from the fixture, press the release latch and gently pull the EZ-N-STALL™ Connector away from the fixture.)



**STEP 4:** Using the Fixture Mounting Screw (F), assemble the fixture to the Mounting Bar (C) making sure that the fixture is properly seated against the gasket (I). Insert the Fixture Mounting Screw Cover (H) into the center of the base. Apply a weatherproof silicone caulk or sealant around the fixture base for a rain-tight seal.

**STEP 5:** Turn the power back on at the main power panel

**IMPORTANT BULB INSTALLATION NOTES**

- **TURN OFF THE POWER BEFORE INSTALLING OR CHANGING THE BULBS.**
- When replacing bulbs, disconnect the power and allow the fixture to cool down for at least 20 minutes.
- Never touch the bulbs with your hands, use a soft cloth.
- Never use a bulb with a higher wattage than the stated maximum wattage allowed for the fixture.

**INSTALLING THE BULB**

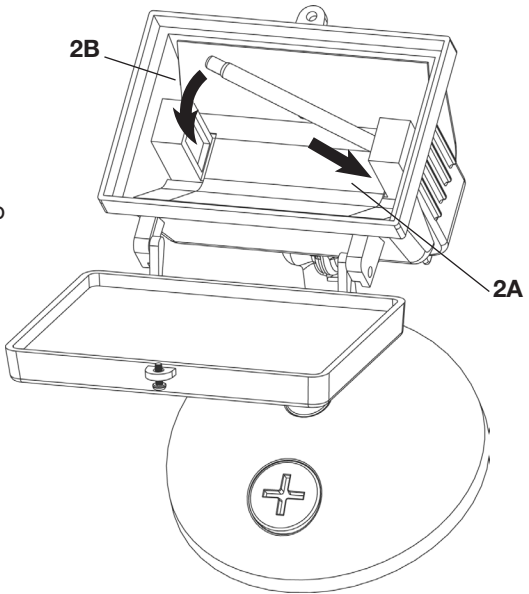
**STEP 1:** Open the lens cover by unscrewing the top screw of the floodlight and remove the old bulb (if any) by shifting the bulb to the right until the left end of the bulb is clear of the socket.

**STEP 2:** Carefully remove the new halogen bulb from its container using a soft clean cloth. Insert the new bulb by pushing the bulb into the right socket (step 2A), then seat the left end of the bulb firmly into the left socket (step 2B).

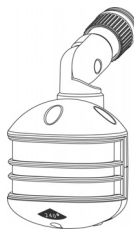
**STEP 3:** Swing the lens cover back into position and secure the screw at the top of the lamp head.

**STEP 4:** For maximum bulb life, position the lamp head so that the halogen bulb is horizontal (within 2 degrees).

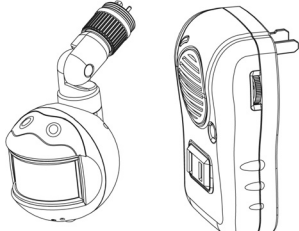
**STEP 5:** Dispose of the old bulb(s) properly in accordance with local ordinances.



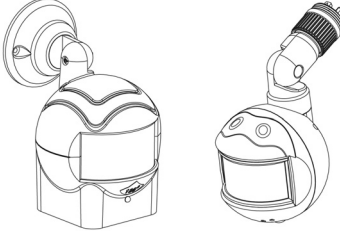
The fixture is now ready for manual operation by using the wall-switch connected to the circuit. For automatic control operation, an optional CREATaLIGHT™ Accessory (sold separately) can be attached to this base unit.



Motion Sensor – 110°, 180°, or 240°



Motion Sensor/Transmitter – With Indoor Alarm

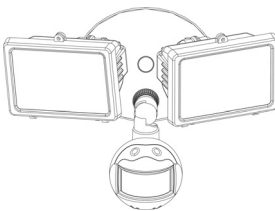


Motion Sensor/Transmitter – With Remote Sensor

**Optional CREATaLIGHT™ Accessories**

Please contact your local CREATaLIGHT™ retailer for product availability.

- 110 Degree Detection Zone Motion Sensor – With integrated photocell (Series 7811)
- 180 Degree Detection Zone Motion Sensor – With integrated photocell (Series 7818)
- 240 Degree Detection Zone Motion Sensor – With integrated photocell (Series 7828)
- 180 Degree Detection Zone Motion Sensor/Transmitter – With Indoor Alarm (Series 7938)
- 180 Degree Detection Zone Remote Motion Sensor – With transmitter to activate another fixture within 100 feet (Series 7948)



**ATTACHING OPTIONAL LIGHTING CONTROL ACCESSORIES**

The versatility of the CREATaLIGHT™ system is the ability to attach a variety of optional lighting control accessories to the base unit. A CREATaLIGHT™ Accessory is attached to the base by simply plugging in the accessory into the accessory socket. Please refer to the instructions provided with the optional accessory for detailed installation instructions.

**IMPORTANT NOTES**

- Use only accessories that are marked for the CREATaLIGHT™ system. Using or attaching other accessories or devices can cause a fire hazard or damage the unit.
- Only one CREATaLIGHT™ Accessory at a time can be attached to a CREATaLIGHT™ base.
- As a safety feature, the lighting fixture will only operate with either a CREATaLIGHT™ Accessory installed or the CREATaLIGHT™ Accessory socket cover in place.

**QUESTIONS**

For further assistance or for more information, please call 1-800-562-5625, 8 am – 5 pm (Pacific Time), Monday – Friday